



VELOCE WASH TC

PHOTOMETRY



AYRTON

Digital Lighting



Total Flux	Up to 20,200 lm (@zoom 128, fan mode STAGE, Sphere)
-------------------	---

CCT @ light source engine	6500 K (±400K) - CL 500 measurement tool
----------------------------------	--

CCT @ open	6000 K (±350 K) - CL 500 measurement tool
-------------------	---

Ra @ open	95 (±2)
------------------	---------

TLCI	98
-------------	----

TM-30	Rf: 92.6 Rg: 101
--------------	------------------

Fan Mode	Noise Level (dBA)	by Goniometer (lm)	by Sphere (lm)
Auto	43.8	16,500 lm	19,800 lm
Stage	48.8	16,800 lm	20,160 lm
Silence	36.8	12,100 lm	14,520 lm
Super Silence	32.5	-	-

Note: noise measured @1m distance, static status, ambient 31 dBA.

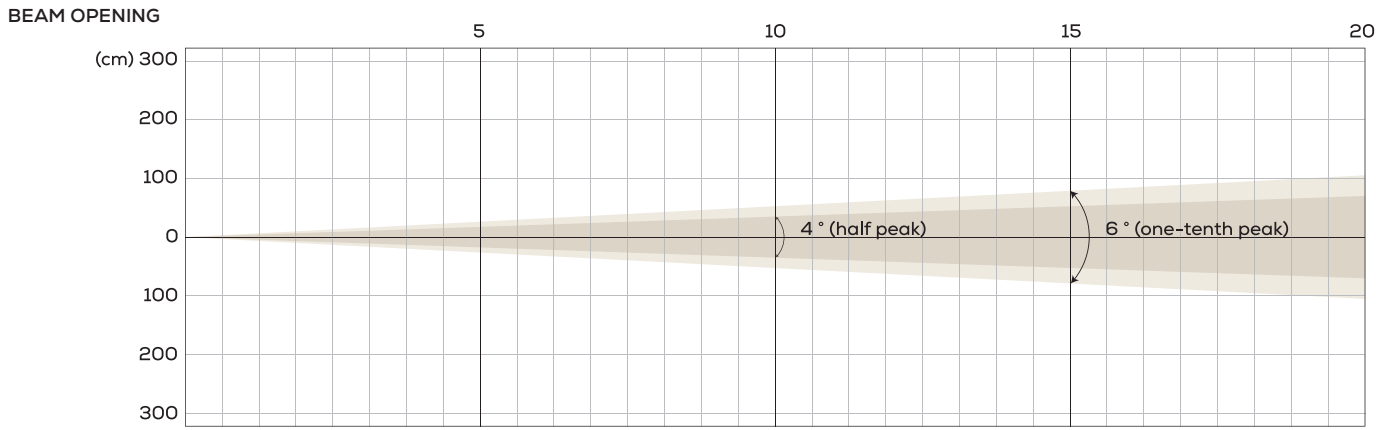
Voltage / Power	100-240 V, 50-60 Hz	1,300 W
------------------------	---------------------	---------

Fixture Dimension / Weight	404 x 757 x 366 mm	39 kg
-----------------------------------	--------------------	-------

Packing Dimension / Weight	695 x 745 x 515 mm	54.5 kg
-----------------------------------	--------------------	---------

AUTO MODE | NATIVE CRI GREATER THAN 70

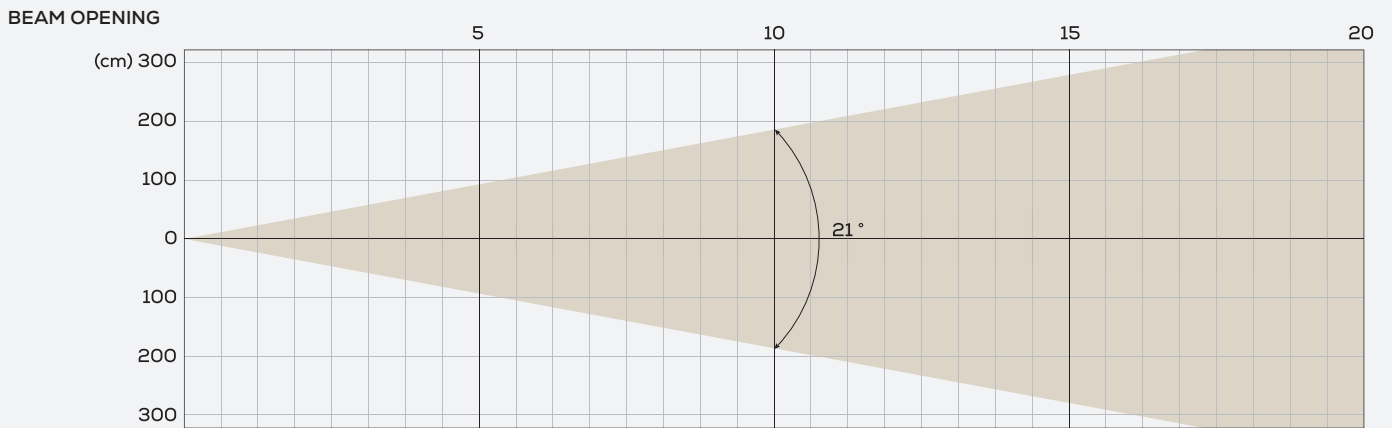
MIN ZOOM



INTENSITY

Distance (m)	5		10		15		20	
unit	Lux	Diameter	Lux	Diameter	Lux	Diameter	Lux	Diameter
Half peak/ One-tenth peak	42,821	0.35 0.52	10,705	0.7 1.05	4,758	1.05 1.57	2,676	1.4 2.1

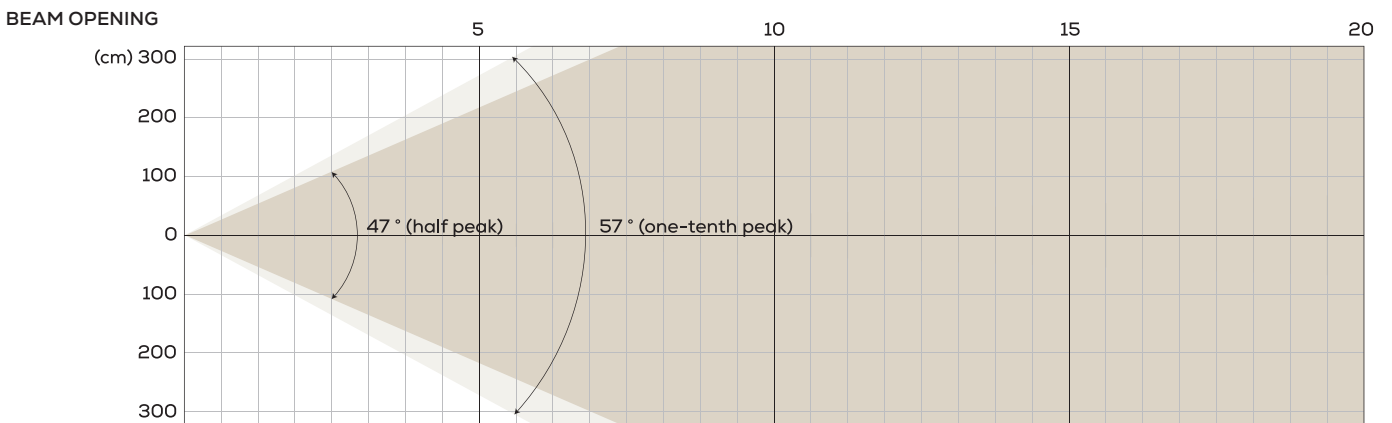
MIDDLE ZOOM



INTENSITY

Distance (m)	5		10		15		20	
unit	Lux	Diameter	Lux	Diameter	Lux	Diameter	Lux	Diameter
White	8,221	1.85	2,055	3.71	913	5.56	514	7.41

MAX ZOOM

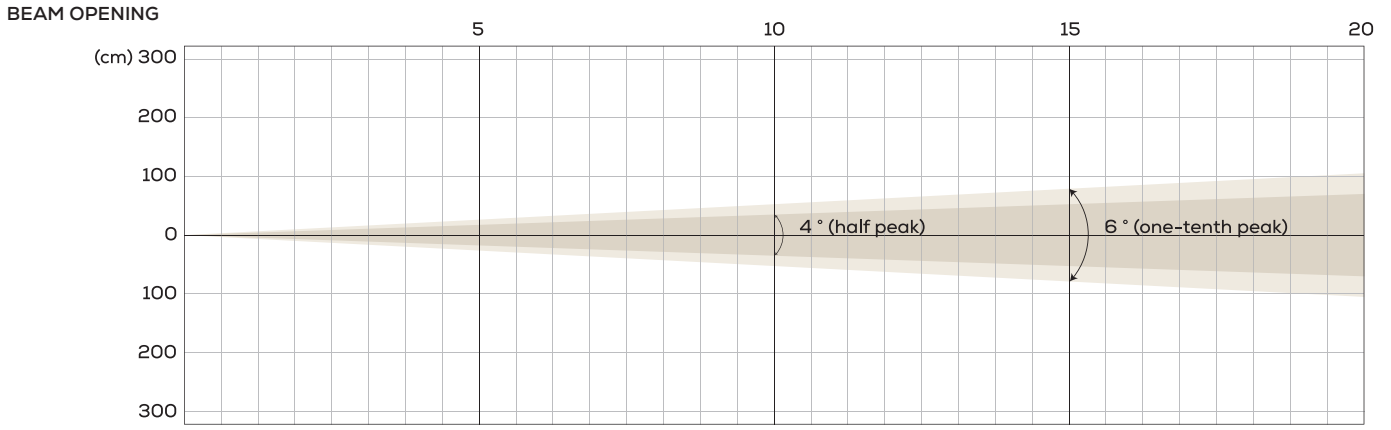


INTENSITY

Distance (m)	5		10		15		20	
unit	Lux	Diameter	Lux	Diameter	Lux	Diameter	Lux	Diameter
Half peak/ One-tenth peak	1,191	4.35 5.43	298	8.7 10.86	132	13.04 16.29	74	17.39 21.72

STAGE MODE | NATIVE CRI GREATER THAN 70

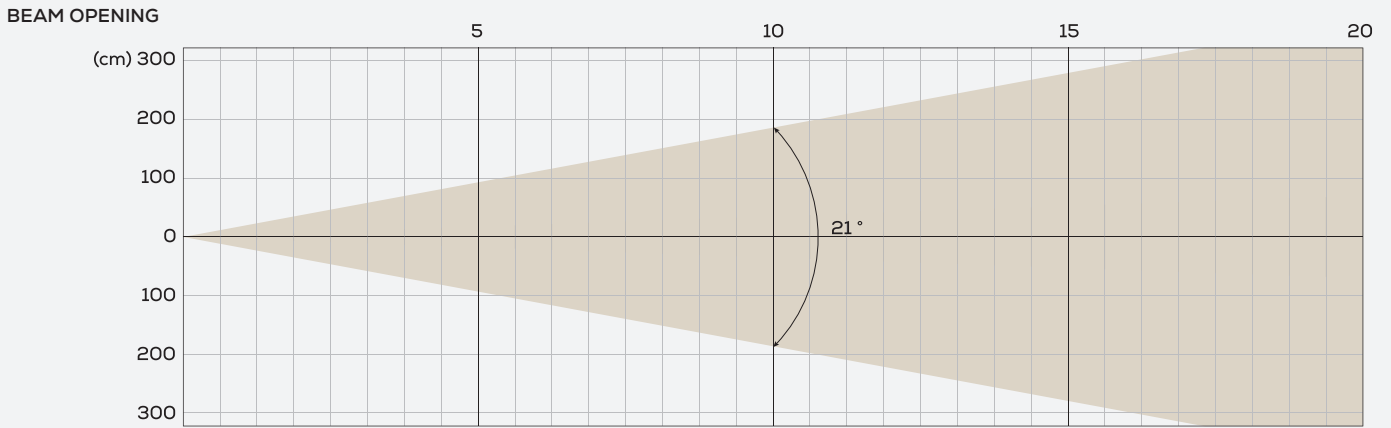
MIN ZOOM



INTENSITY

Distance (m)	5		10		15		20	
unit	Lux	Diameter	Lux	Diameter	Lux	Diameter	Lux	Diameter
Half peak/ One-tenth peak	44,516	0.35 0.52	11,129	0.7 1.05	4,946	1.05 1.57	2,782	1.4 2.1

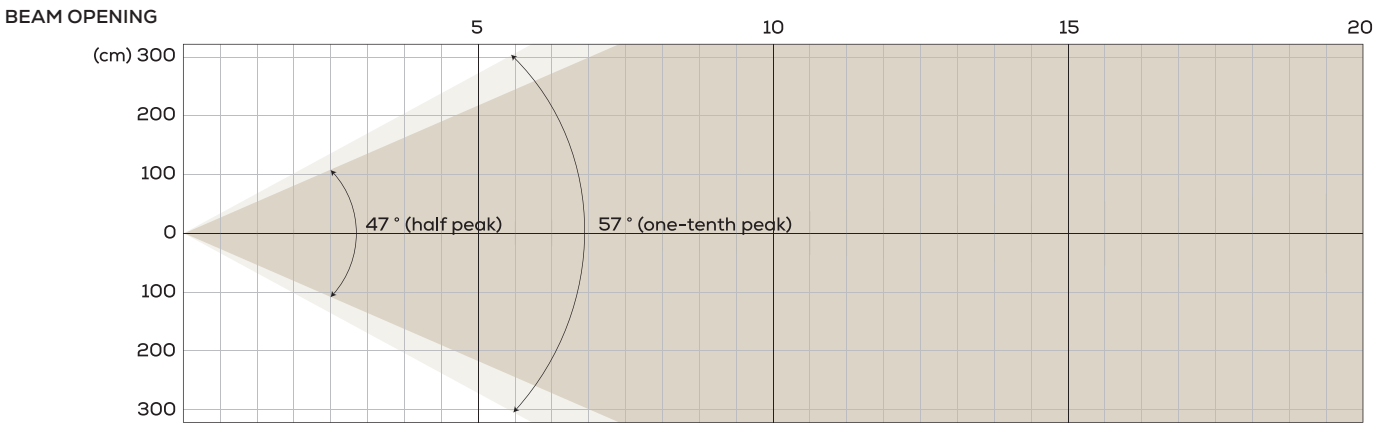
MIDDLE ZOOM



INTENSITY

Distance (m)	5		10		15		20	
unit	Lux	Diameter	Lux	Diameter	Lux	Diameter	Lux	Diameter
White	8,468	1.85	2117	3.71	941	5.56	529	7.41

MAX ZOOM

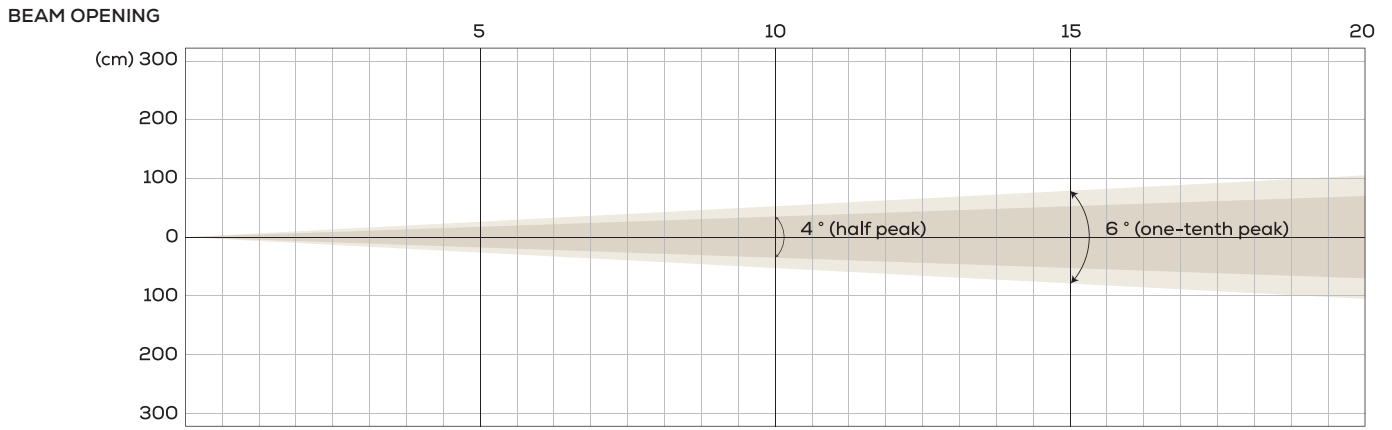


INTENSITY

Distance (m)	5		10		15		20	
unit	Lux	Diameter	Lux	Diameter	Lux	Diameter	Lux	Diameter
Half peak/ One-tenth peak	1,203	4.35 5.43	301	8.7 10.86	134	13.04 16.29	75	17.39 21.72

SUPER SILENCE MODE | NATIVE CRI GREATER THAN 70

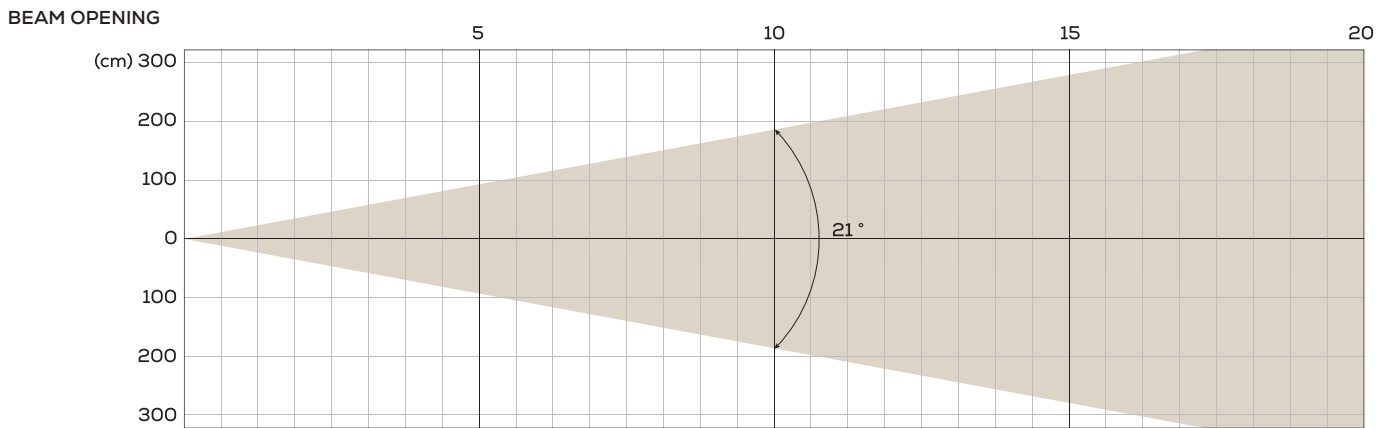
MIN ZOOM



INTENSITY

Distance (m)	5		10		15		20	
unit	Lux	Diameter	Lux	Diameter	Lux	Diameter	Lux	Diameter
Half peak/ One-tenth peak	32200	0.35 0.52	8050	0.7 1.05	3578	1.05 1.57	2013	1.4 2.1

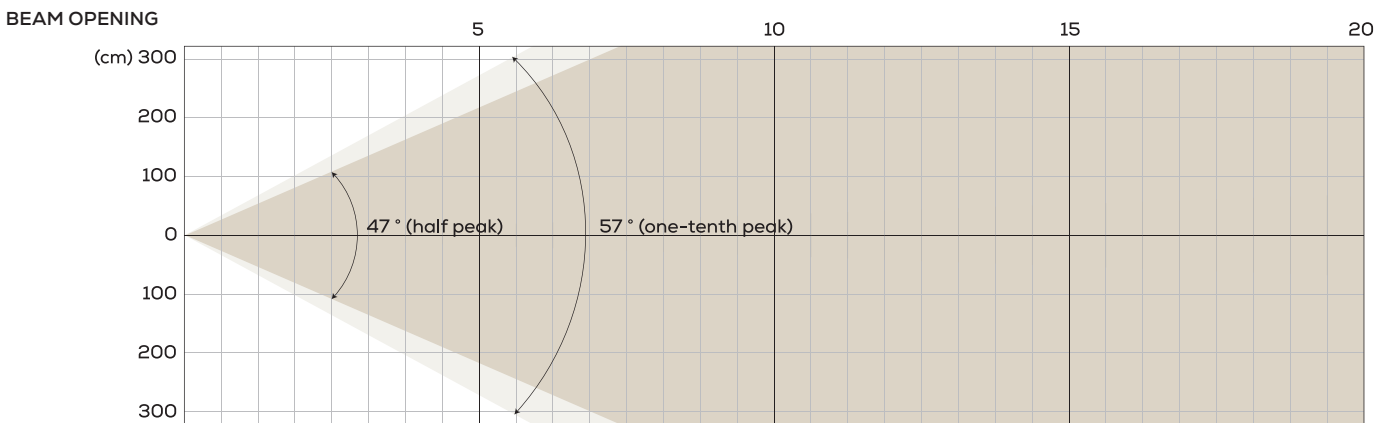
MIDDLE ZOOM



INTENSITY

Distance (m)	5		10		15		20	
unit	Lux	Diameter	Lux	Diameter	Lux	Diameter	Lux	Diameter
White	6093	1.85	1523	3.71	677	5.56	381	7.41

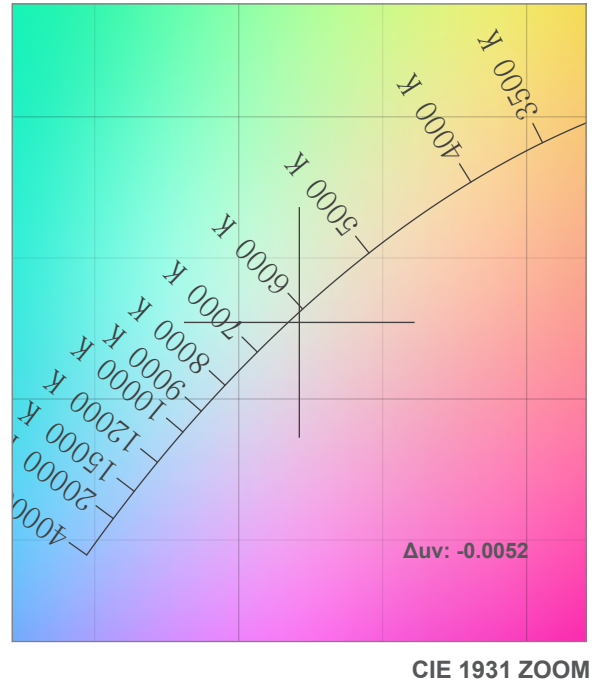
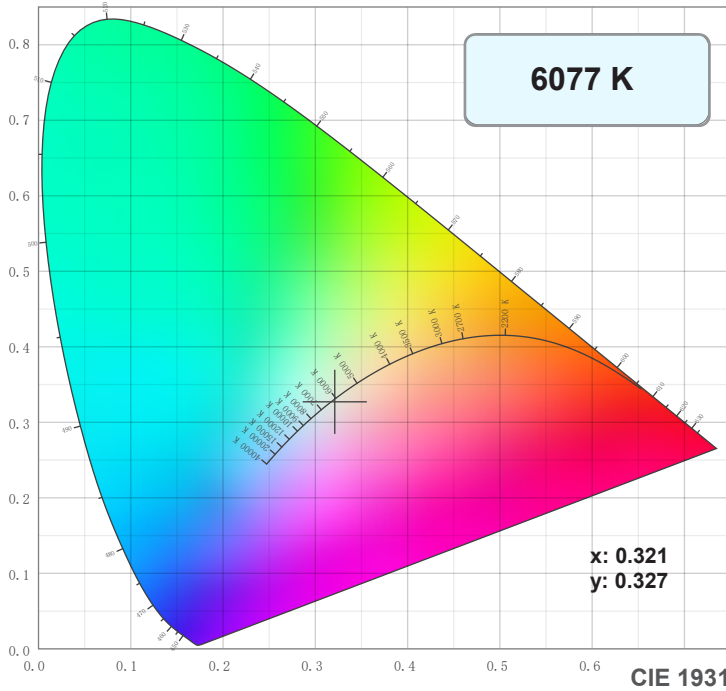
MAX ZOOM



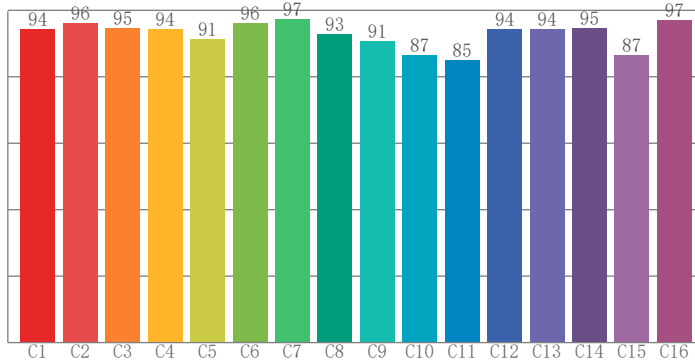
INTENSITY

Distance (m)	5		10		15		20	
unit	Lux	Diameter	Lux	Diameter	Lux	Diameter	Lux	Diameter
Half peak/ One-tenth peak	852	4.35 5.43	213	8.7 10.86	95	13.04 16.29	53	17.39 21.72

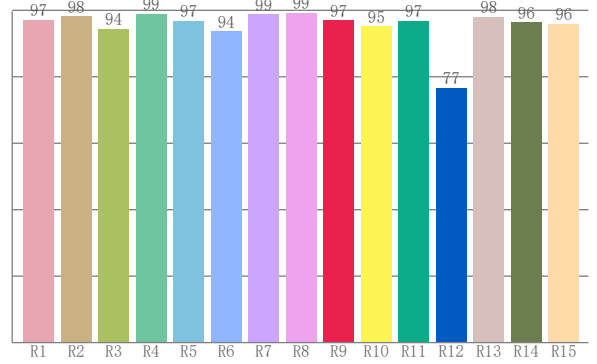
COLOUR DETAILS



TM-30: 92.6



CRI: 97.2 (R1-R8)



CRI R values, only R1-R8 are used to calculate final CRI value

R1	R2	R3	R4	R5	R6	R7	R8	R9	R10	R11	R12	R13	R14	R15
97.1	98.2	94.4	99.0	96.9	93.7	98.8	99.3	96.9	95.1	96.9	76.6	98.1	96.4	95.9

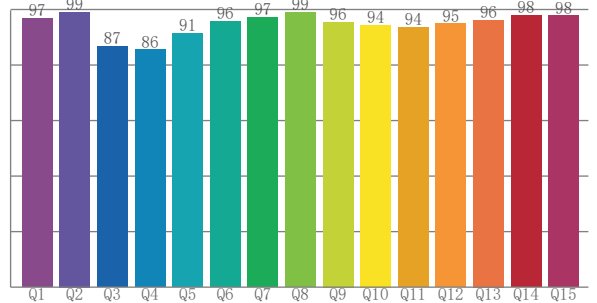
TM30 C values, 16 binned values out of total of 99 C values

C1	C2	C3	C4	C5	C6	C7	C8	C9	C10	C11	C12	C13	C14	C15	C16
94.3	96.2	94.7	94.4	91.3	96.2	97.3	92.8	90.7	86.6	85.1	94.5	94.5	94.7	86.6	97.1

CQS Q values

Q1	Q2	Q3	Q4	Q5	Q6	Q7	Q8	Q9	Q10	Q11	Q12	Q13	Q14	Q15
96.8	99.1	86.8	85.5	91.5	95.7	97.1	99.0	95.5	94.4	93.6	94.9	96.3	97.8	97.7

CQS: 93.5



Color parameters

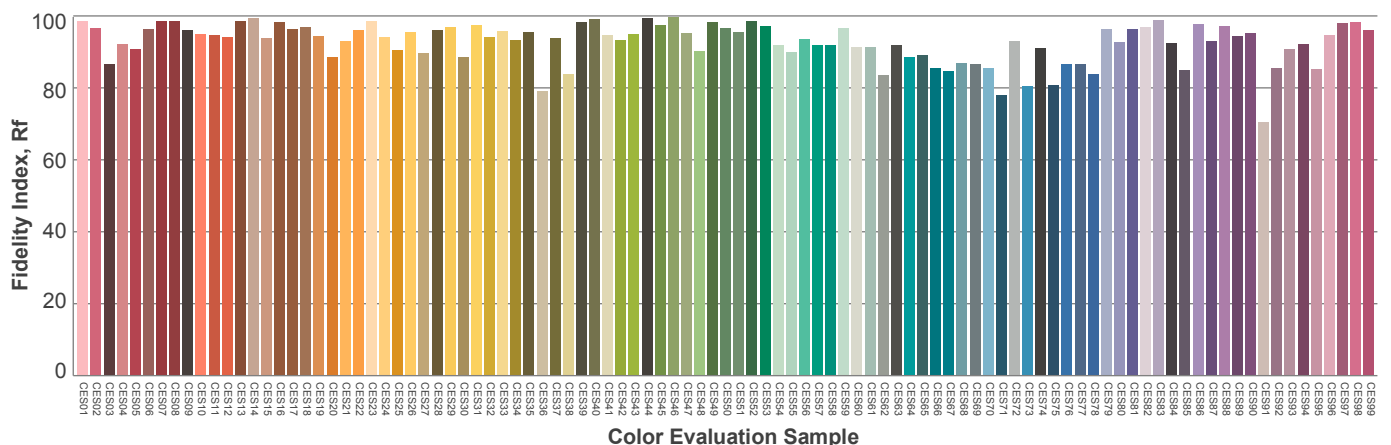
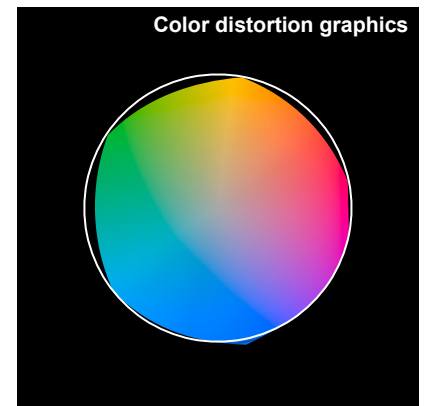
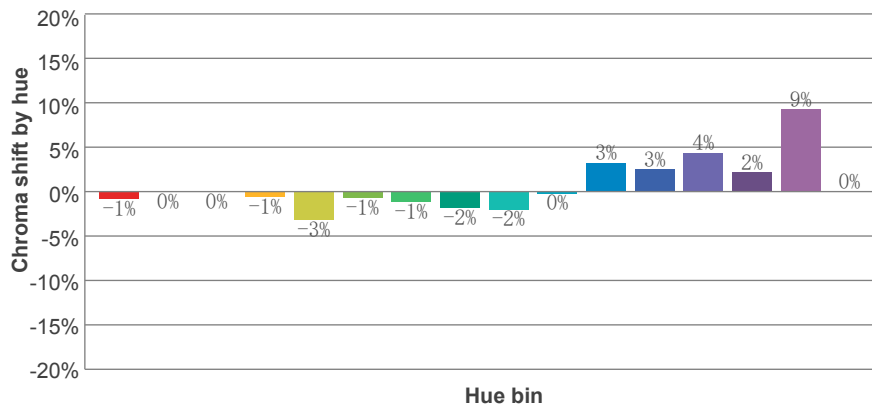
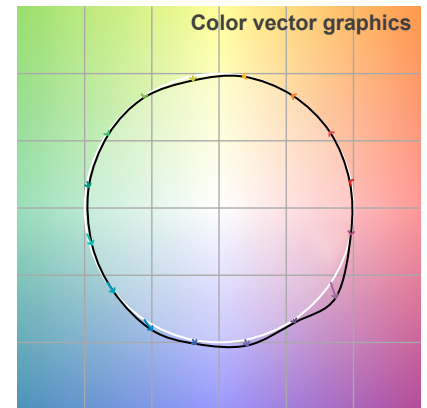
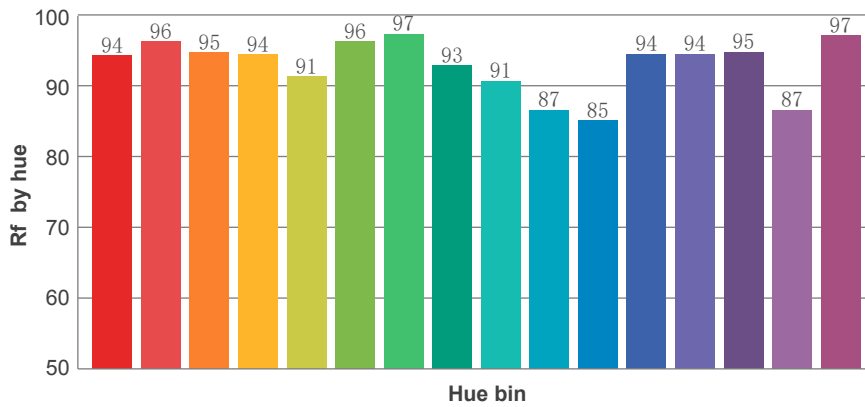
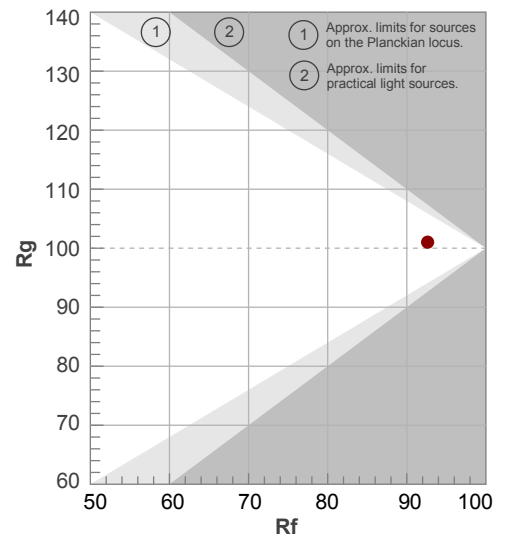
Color temperature	Color rendering index	Red component	Color fidelity	Color gamut	Color quality scale	Color coordinate cie 1931	Color coordinate cie 1931	Color coordinate	Color coordinate	Color deviation from black body
CCT	CRI	CRI R9	TM30 Rf	TM30 Rg	CQS	x	y	u	v	Δuv
6077 K	97.2	96.9	92.6	101.0	93.5	0.321	0.327	0.204	0.312	-0.0052

TM-30 DETAILS

Rf 92.6
Fidelity index Rf

Rg 101.0
Gamut index Rg

Hue Bin	R _f	Shifts (%)	
		Chroma	Hue
1	94	-1%	1%
2	96	0%	1%
3	95	0%	1%
4	94	-1%	2%
5	91	-3%	0%
6	96	-1%	1%
7	97	-1%	0%
8	93	-2%	4%
9	91	-2%	8%
10	87	0%	9%
11	85	3%	9%
12	94	3%	3%
13	94	4%	1%
14	95	2%	0%
15	87	9%	-7%
16	97	0%	0%



TLCI 98





AYRTON

Digital Lighting