



# **VELOCE** WASH S

PHOTOMETRY



**AYRTON**

Digital Lighting





<b>Total Flux</b>	Up to 40,000 lm (@zoom 128, fan mode STAGE, Sphere)
<b>CCT @ light source engine</b>	7400 K (±250 K) - CL 500 measurement tool
<b>CCT @ open</b>	6500 K (±350 K) - CL 500 measurement tool
<b>Ra @ open</b>	70 (±2)
<b>TLCI</b>	48
<b>TM-30</b>	Rf: 70.5 Rg: 94.6

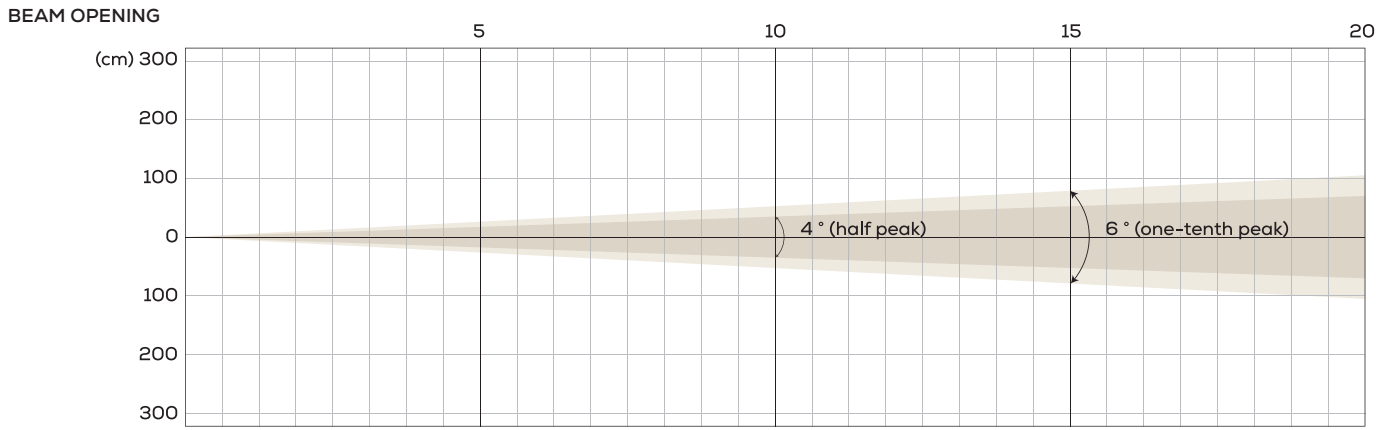
Fan Mode	Noise Level (dBA)	by Goniometer (lm)	by Sphere (lm)
<b>Auto</b>	43.8	30,800 lm	38,800 lm
<b>Stage</b>	48.8	33,100 lm	39,600 lm
<b>Silence</b>	36.8	24,500 lm	29,500 lm
<b>Super Silence</b>	32.5	17,160 lm	20,600 lm

Note: noise measured @1m distance, static status, ambient 31 dBA.

<b>Voltage / Power</b>	100-240 V, 50-60 Hz	1,300 W
<b>Fixture Dimension / Weight</b>	404 x 757 x 366 mm	39 kg
<b>Packing Dimension / Weight</b>	695 x 745 x 515 mm	54.5 kg

**AUTO MODE | NATIVE CRI GREATER THAN 70**

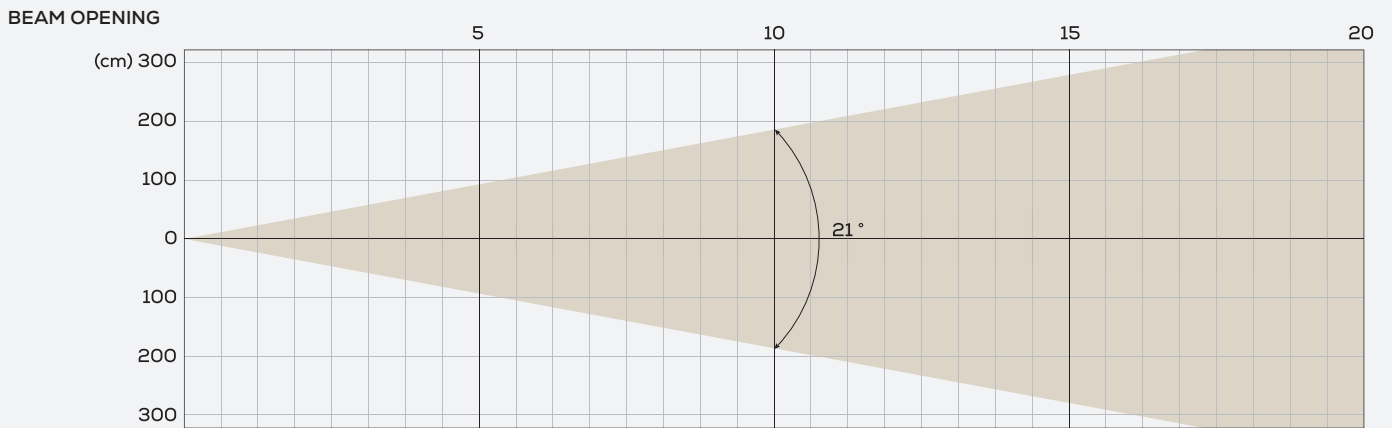
MIN ZOOM



INTENSITY

Distance (m)	5		10		15		20	
unit	Lux	Diameter	Lux	Diameter	Lux	Diameter	Lux	Diameter
Half peak/ One-tenth peak	81,264	0.35 0.52	20,316	0.7 1.05	9,029	1.05 1.57	5,079	1.4 2.1

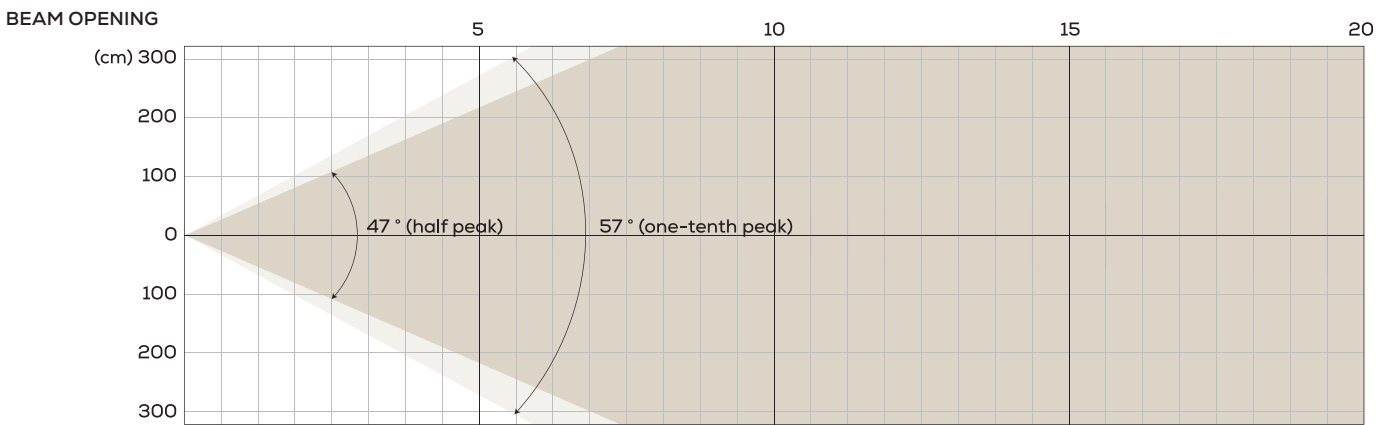
MIDDLE ZOOM



INTENSITY

Distance (m)	5		10		15		20	
unit	Lux	Diameter	Lux	Diameter	Lux	Diameter	Lux	Diameter
White	16,266	1.85	4,067	3.71	1,807	5.56	1,017	7.41

MAX ZOOM

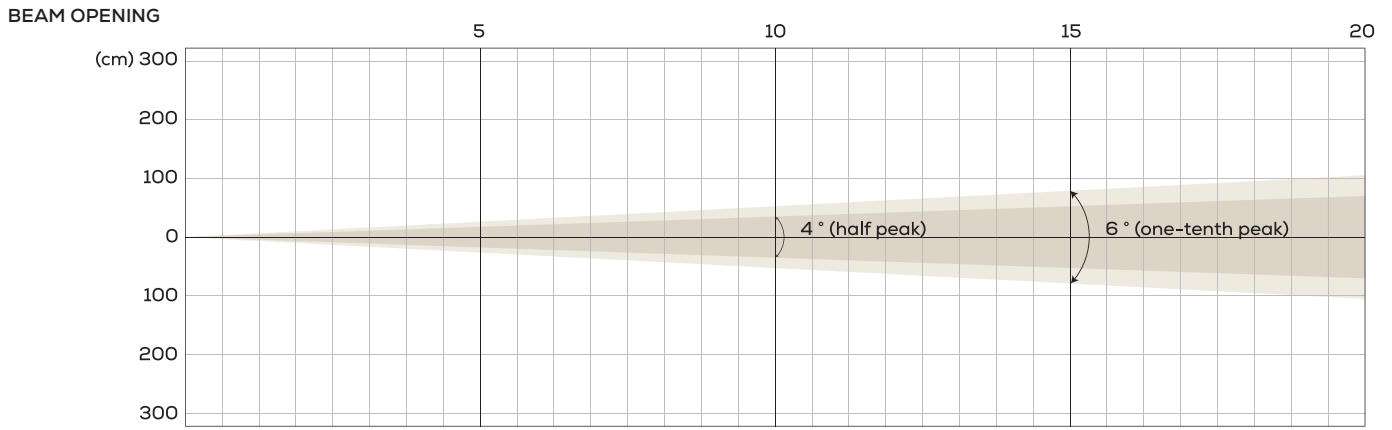


INTENSITY

Distance (m)	5		10		15		20	
unit	Lux	Diameter	Lux	Diameter	Lux	Diameter	Lux	Diameter
Half peak/ One-tenth peak	2,467	4.35 5.43	617	8.7 10.86	274	13.04 16.29	154	17.39 21.72

STAGE MODE | NATIVE CRI GREATER THAN 70

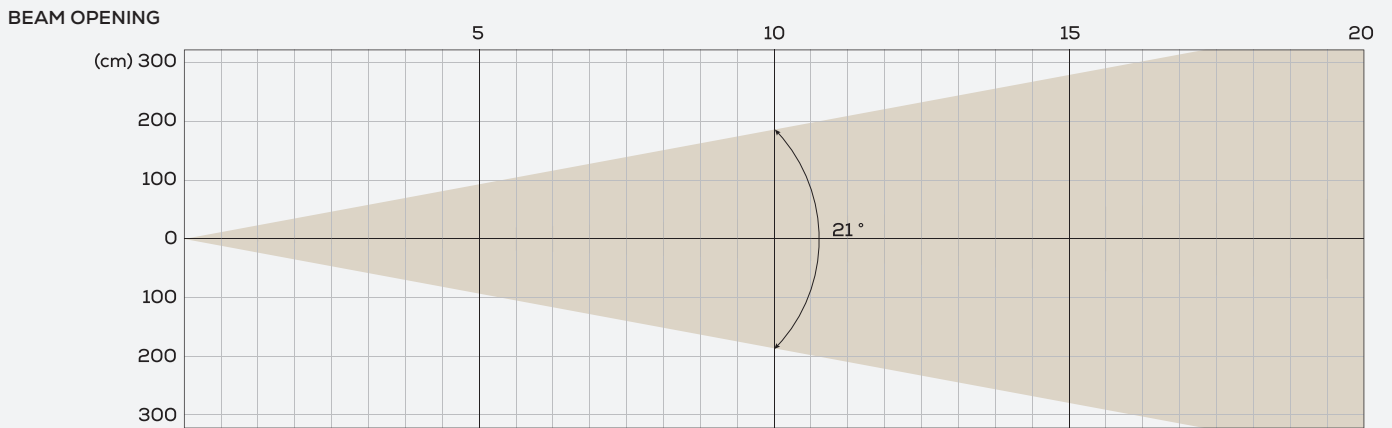
MIN ZOOM



INTENSITY

Distance (m)	5		10		15		20	
unit	Lux	Diameter	Lux	Diameter	Lux	Diameter	Lux	Diameter
Half peak/ One-tenth peak	87,814	0.35 0.52	21,954	0.7 1.05	9,757	1.05 1.57	5,488	1.4 2.1

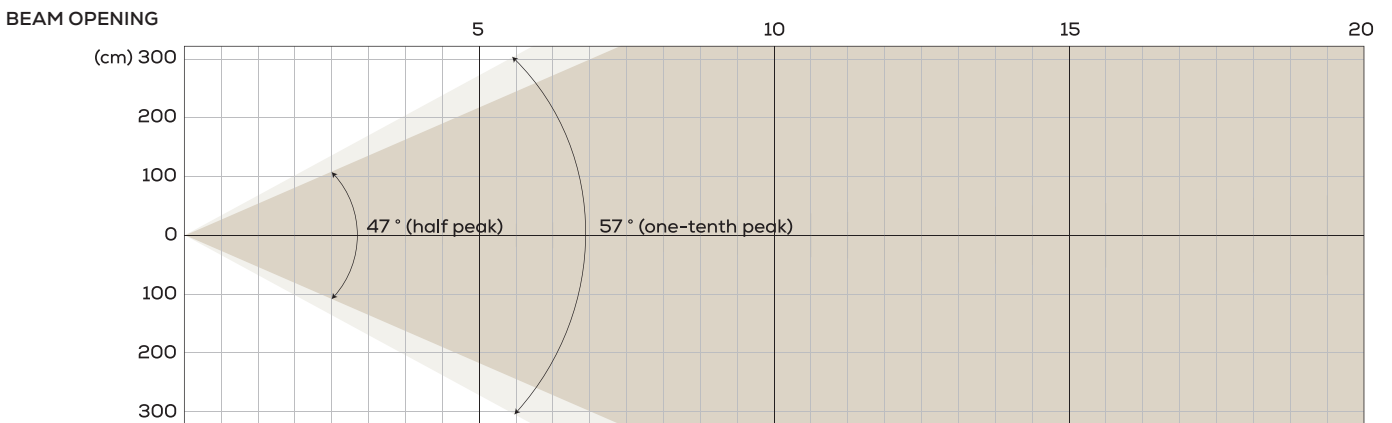
MIDDLE ZOOM



INTENSITY

Distance (m)	5		10		15		20	
unit	Lux	Diameter	Lux	Diameter	Lux	Diameter	Lux	Diameter
White	17,459	1.85	4,365	3.71	1,940	5.56	1,091	7.41

MAX ZOOM

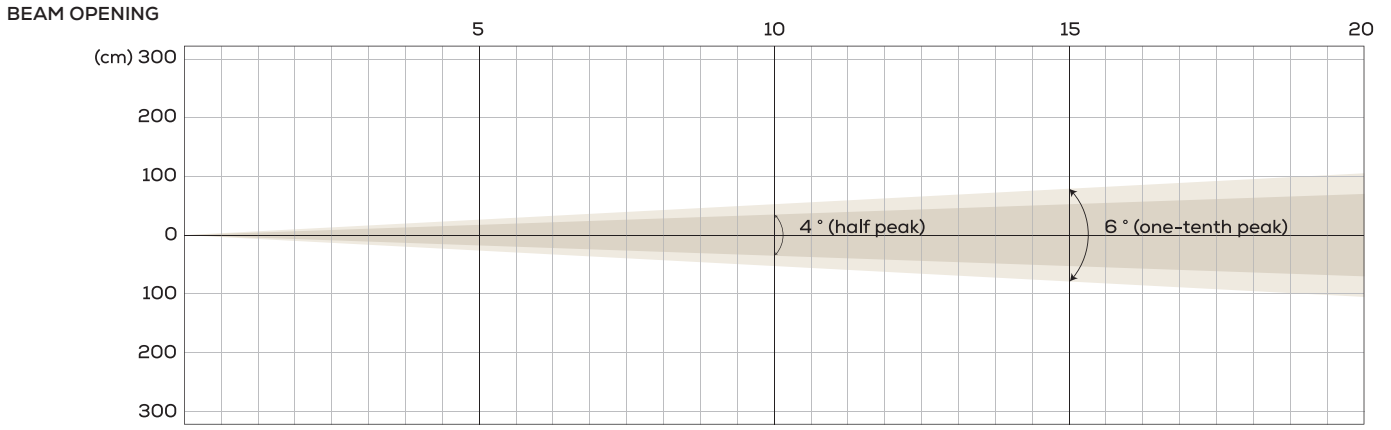


INTENSITY

Distance (m)	5		10		15		20	
unit	Lux	Diameter	Lux	Diameter	Lux	Diameter	Lux	Diameter
Half peak/ One-tenth peak	2,517	4.35 5.43	629	8.7 10.86	280	13.04 16.29	157	17.39 21.72

SILENCE MODE | NATIVE CRI GREATER THAN 70

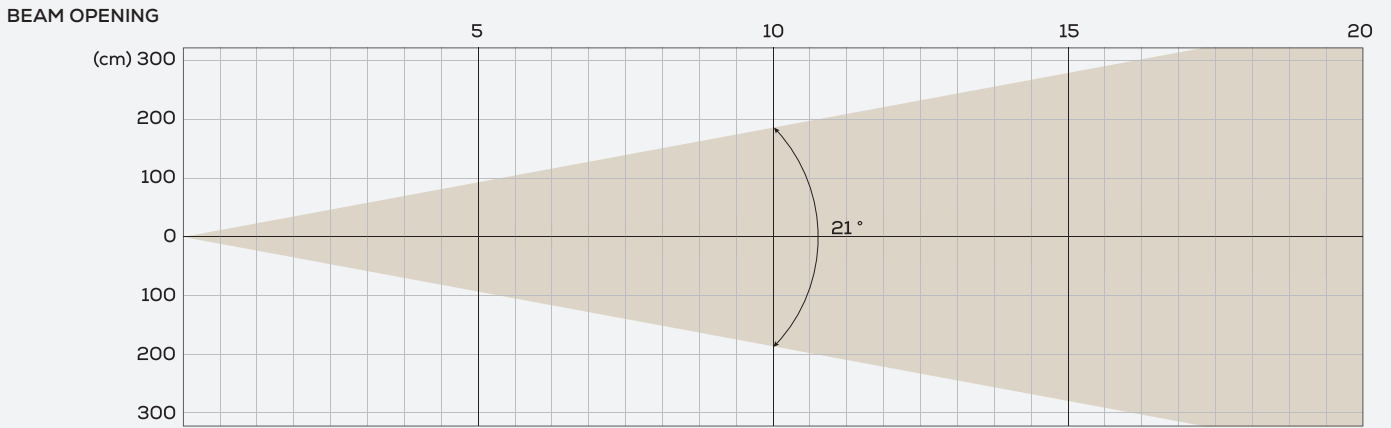
MIN ZOOM



INTENSITY

Distance (m)	5		10		15		20	
unit	Lux	Diameter	Lux	Diameter	Lux	Diameter	Lux	Diameter
Half peak/ One-tenth peak	65,451	0.35 0.52	16,363	0.7 1.05	7,272	1.05 1.57	4,090	1.4 2.1

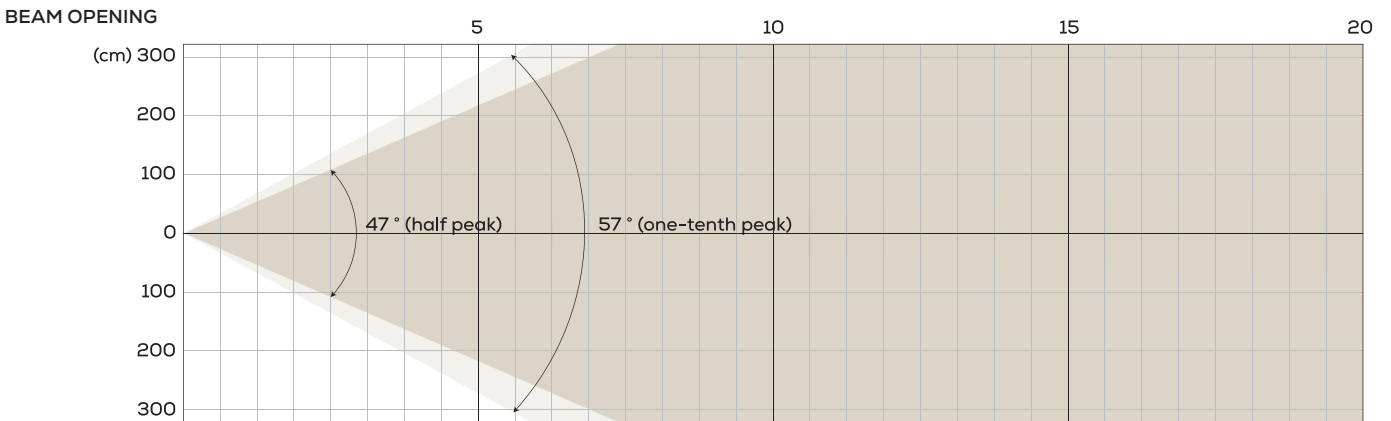
MIDDLE ZOOM



INTENSITY

Distance (m)	5		10		15		20	
unit	Lux	Diameter	Lux	Diameter	Lux	Diameter	Lux	Diameter
White	12,980	1.85	3,245	3.71	1,442	5.56	811	7.41

MAX ZOOM

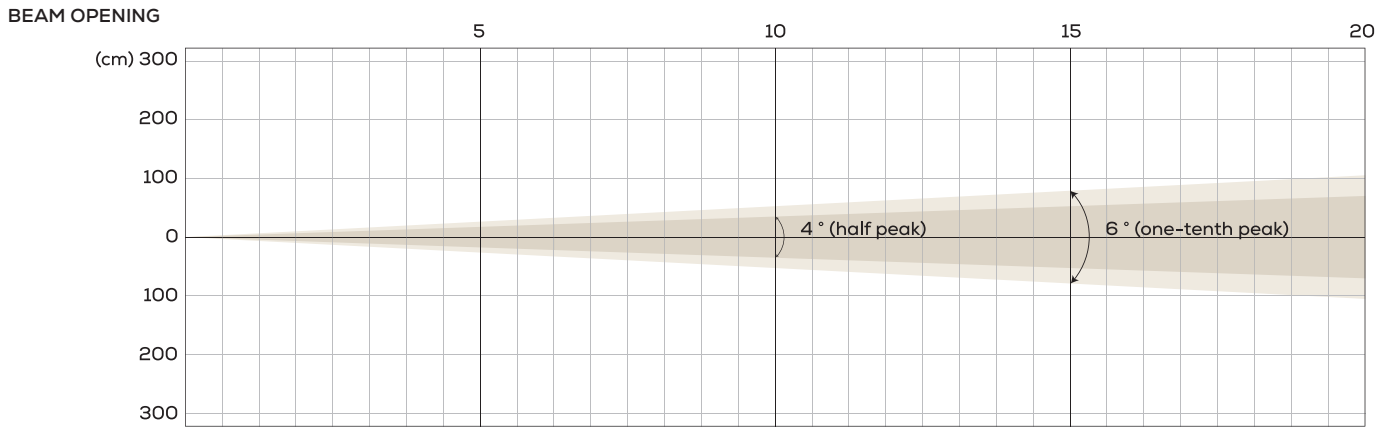


INTENSITY

Distance (m)	5		10		15		20	
unit	Lux	Diameter	Lux	Diameter	Lux	Diameter	Lux	Diameter
Half peak/ One-tenth peak	1,875	4.35 5.43	469	8.7 10.86	208	13.04 16.29	117	17.39 21.72

**SUPER SILENCE MODE | NATIVE CRI GREATER THAN 70**

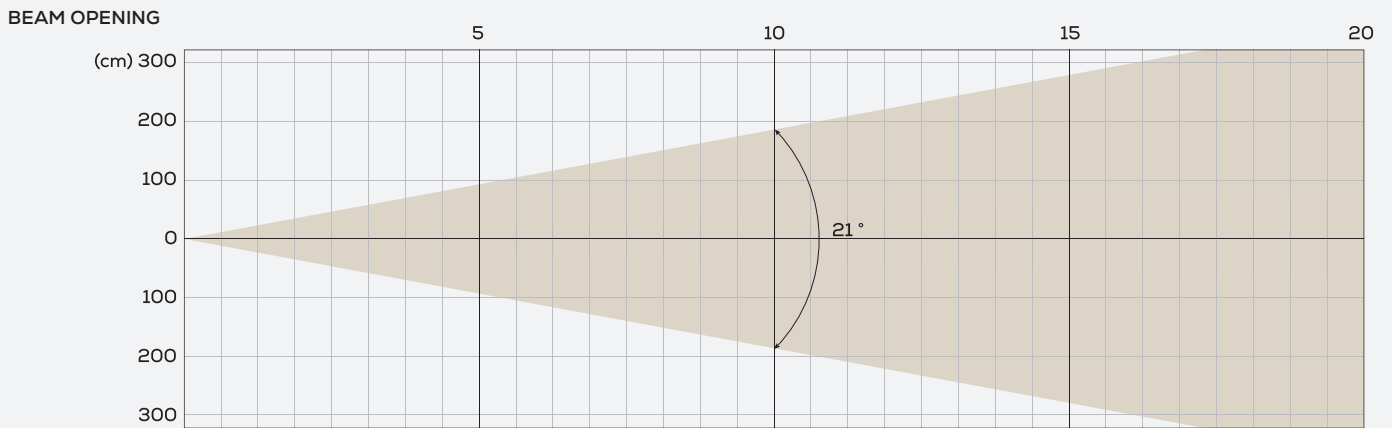
MIN ZOOM



INTENSITY

Distance (m)	5		10		15		20	
unit	Lux	Diameter	Lux	Diameter	Lux	Diameter	Lux	Diameter
Half peak/ One-tenth peak	44,919	0.35 0.52	11,229	0.7 1.05	4,990	1.05 1.57	2,808	1.4 2.1

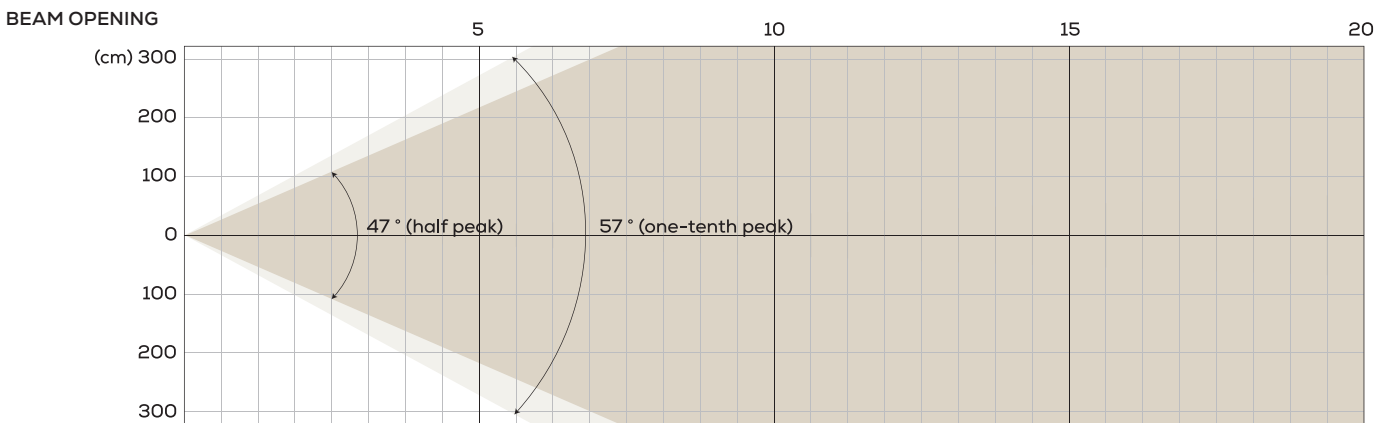
MIDDLE ZOOM



INTENSITY

Distance (m)	5		10		15		20	
unit	Lux	Diameter	Lux	Diameter	Lux	Diameter	Lux	Diameter
White	9,103	1.85	2,276	3.71	1,011	5.56	569	7.41

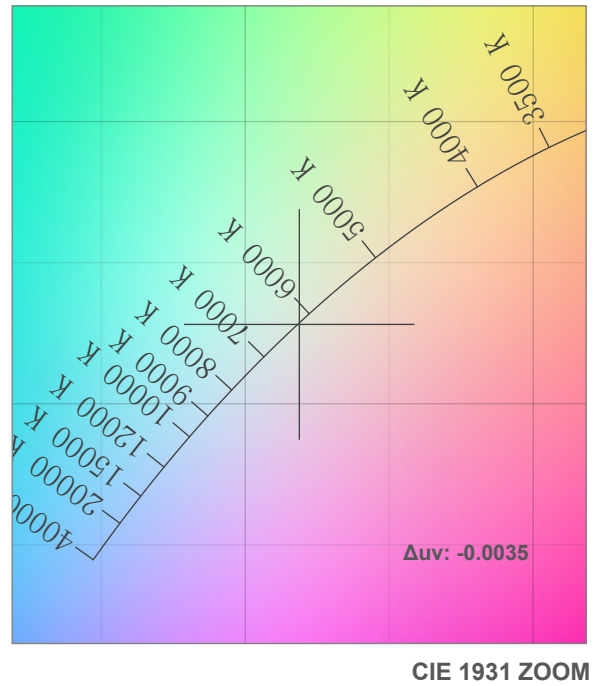
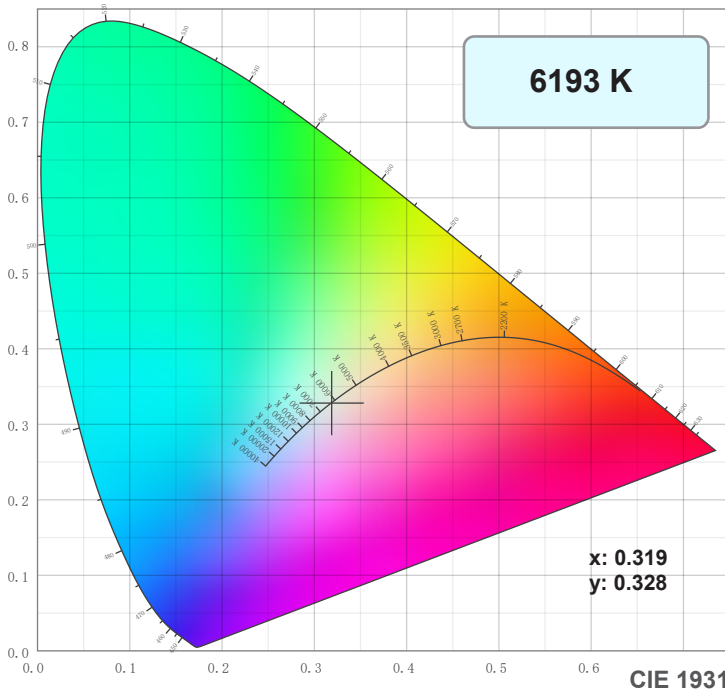
MAX ZOOM



INTENSITY

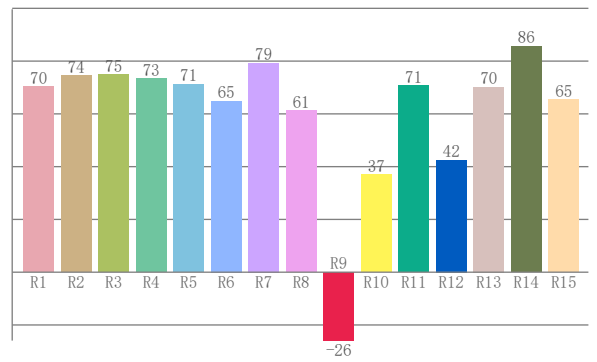
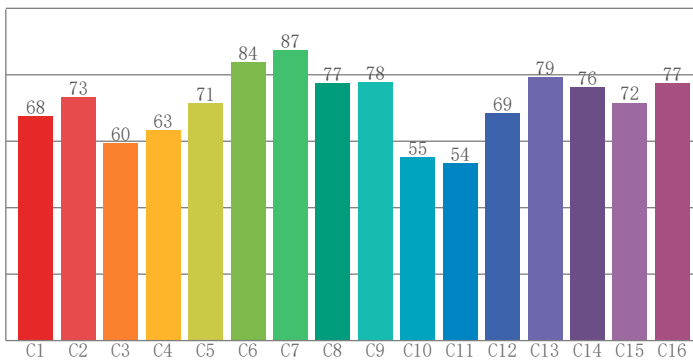
Distance (m)	5		10		15		20	
unit	Lux	Diameter	Lux	Diameter	Lux	Diameter	Lux	Diameter
Half peak/ One-tenth peak	1,306	4.35 5.43	326	8.7 10.86	145	13.04 16.29	82	17.39 21.72

COLOUR DETAILS



TM-30: 70.8

CRI: 71.2 (R1-R8)



CRI R values, only R1-R8 are used to calculate final CRI value

R1	R2	R3	R4	R5	R6	R7	R8	R9	R10	R11	R12	R13	R14	R15
70.3	74.5	74.9	73.4	71.1	64.9	79.2	61.2	-25.9	37.0	70.7	42.5	70.2	85.6	65.4

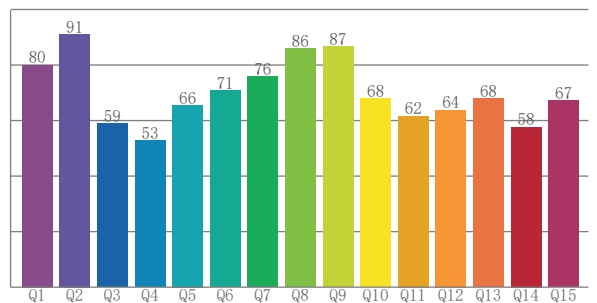
TM30 C values, 16 binned values out of total of 99 C values

C1	C2	C3	C4	C5	C6	C7	C8	C9	C10	C11	C12	C13	C14	C15	C16
67.6	73.3	59.5	63.3	71.5	83.9	87.4	77.5	77.8	55.1	53.5	68.5	79.4	76.2	71.6	77.5

CQS Q values

Q1	Q2	Q3	Q4	Q5	Q6	Q7	Q8	Q9	Q10	Q11	Q12	Q13	Q14	Q15
80.0	91.1	59.0	52.8	65.6	70.8	76.0	85.9	86.6	68.0	61.6	63.9	67.9	57.7	67.1

CQS: 68.3



Color parameters

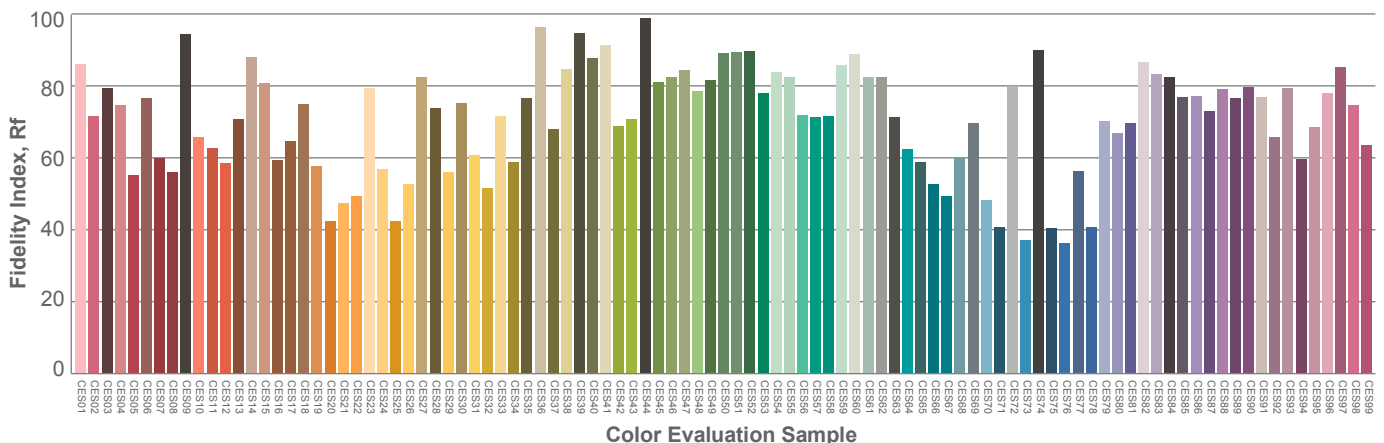
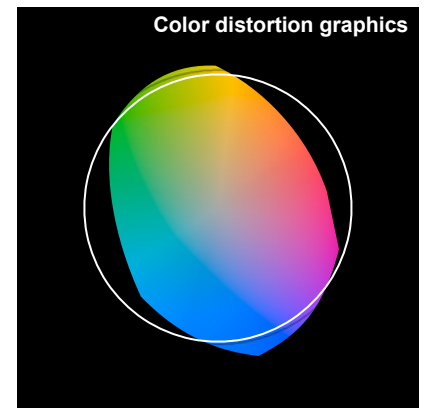
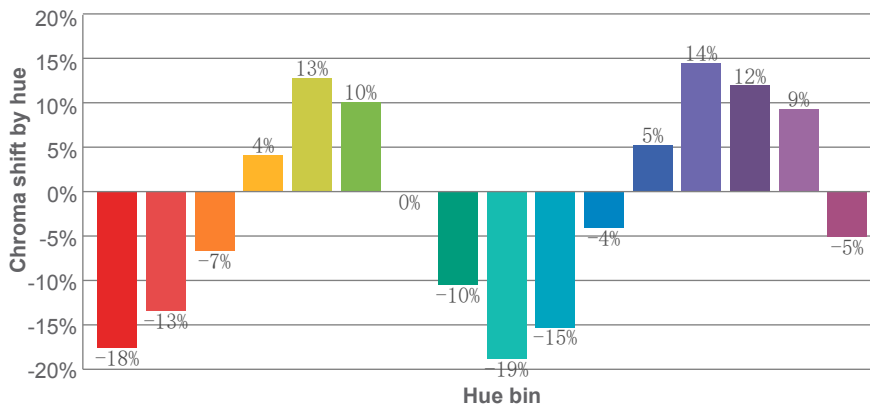
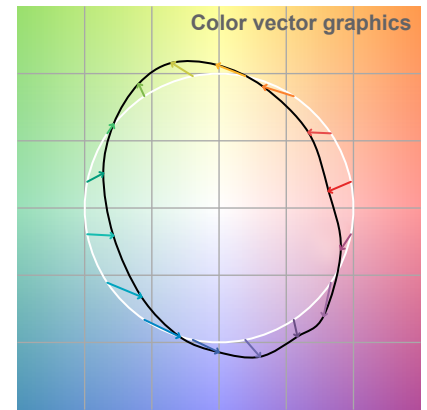
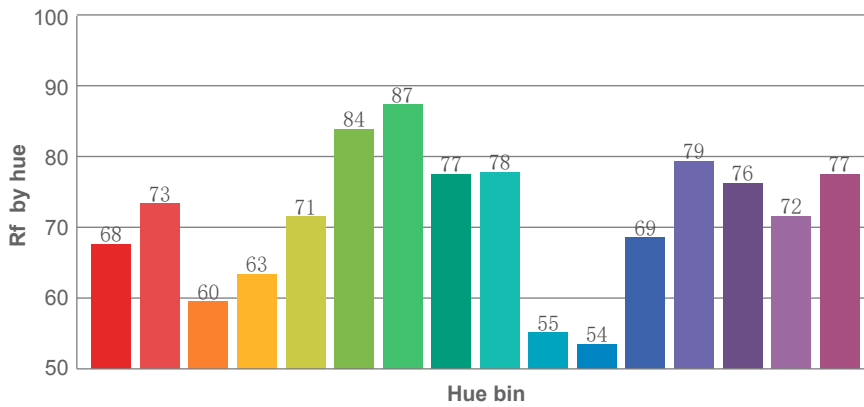
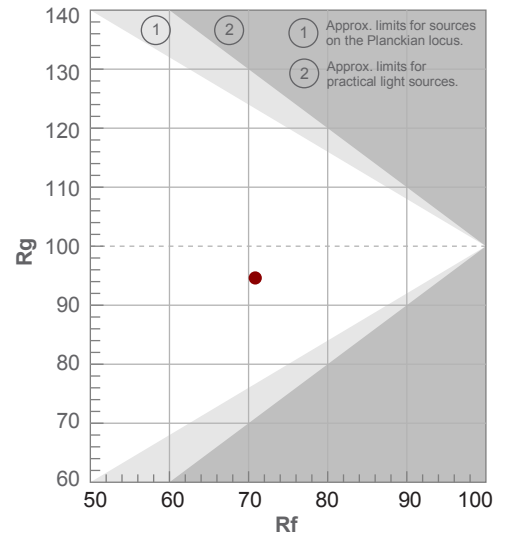
Color temperature	Color rendering index	Red component	Color fidelity	Color gamut	Color quality scale	Color coordinate cie 1931	Color coordinate cie 1931	Color coordinate	Color coordinate	Color deviation from black body
CCT	CRI	CRI R9	TM30 Rf	TM30 Rg	CQS	x	y	u	v	Δuv
6193 K	71.2	-25.9	70.8	94.6	68.3	0.319	0.328	0.202	0.312	-0.0035

TM-30 DETAILS

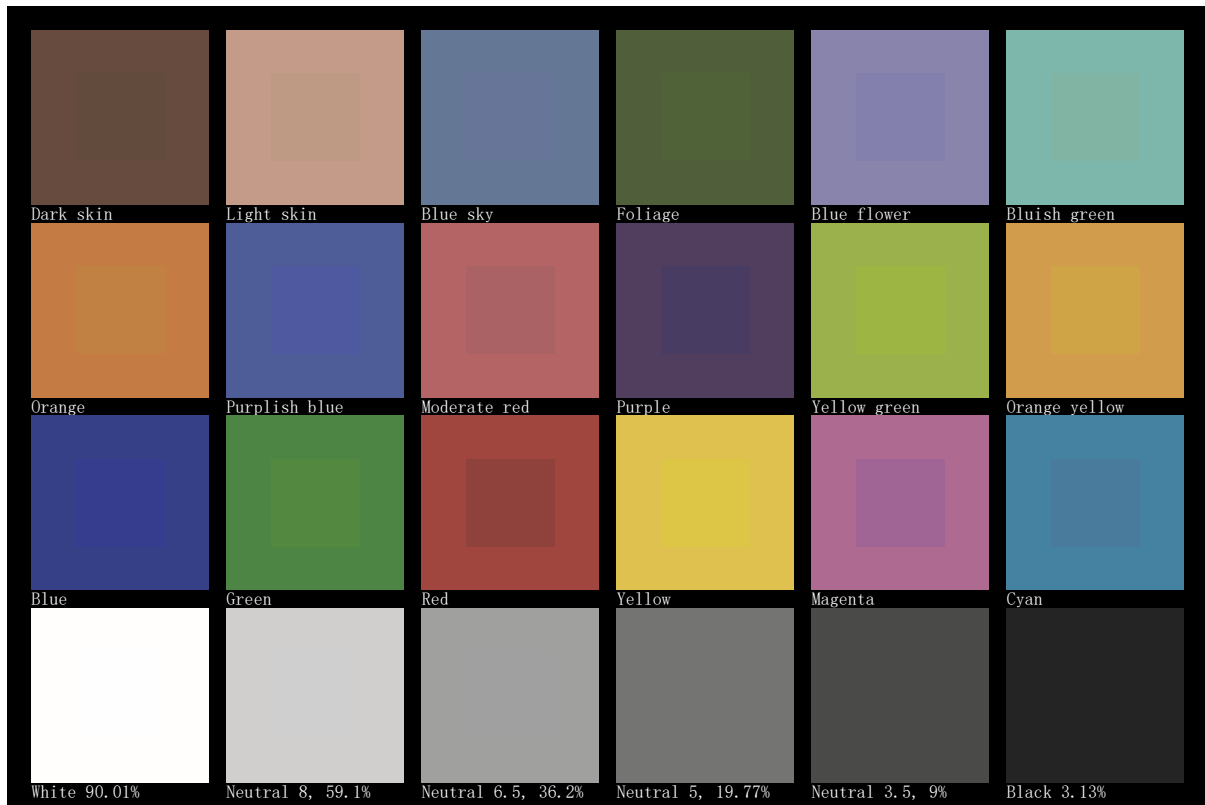
**Rf 70.8**  
Fidelity index Rf

**Rg 94.6**  
Gamut index Rg

Hue Bin	R <sub>f</sub>	Shifts (%)	
		Chroma	Hue
1	68	-18%	-4%
2	73	-13%	10%
3	60	-7%	23%
4	63	4%	23%
5	71	13%	14%
6	84	10%	-2%
7	87	0%	-8%
8	77	-10%	-9%
9	78	-19%	5%
10	55	-15%	23%
11	54	-4%	29%
12	69	5%	21%
13	79	14%	8%
14	76	12%	-5%
15	72	9%	-24%
16	77	-5%	-13%



TLCI 48







**AYRTON**

Digital Lighting